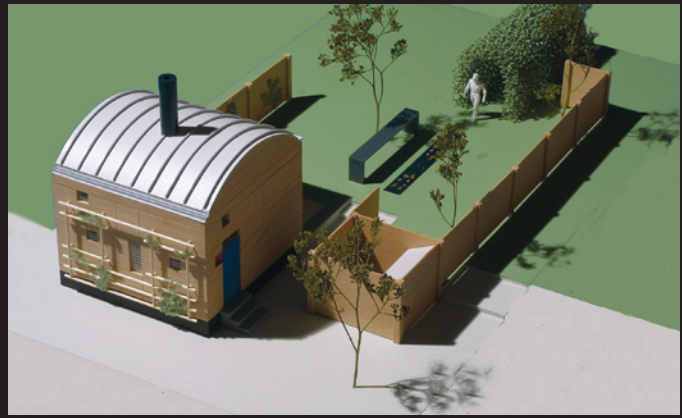
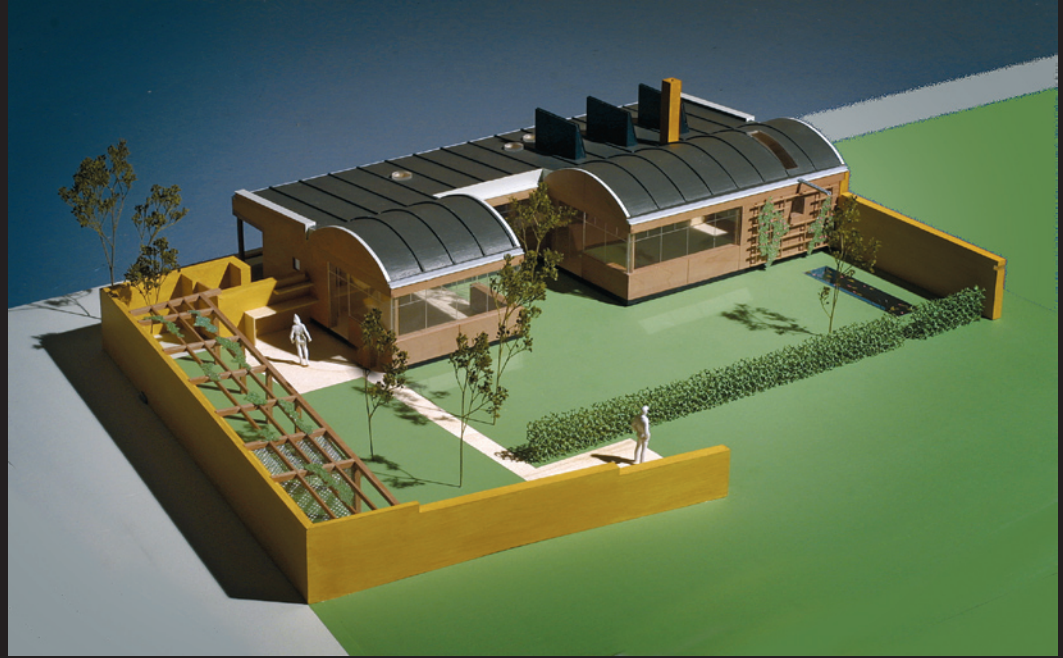


Revitalisation Of The European Village



Landscape-scenario with orchards. The farm is to produce and sell ecological fruit, fruit-juices, cider, calvados...



Landscape-scenario with forestry. The farm is to produce and sell wood products, and for educational purposes within forestry, recreational use and nature conservation.



Landscape-scenario with grassland for keeping cows, horses, goats, sheep: The farm is to produce and sell local ecological meat, cheese, dairy products...



Landscape-scenario with organic farming: The farm is to produce and sell ecological vegetables, lettuce, flowers, spices, medicinal plants....



Partial view of a typical street in the New Garden Village, representing 3 prototypes of houses on 25 sqm, 50 sqm and 175 sqm.

New Garden Village

In Denmark 5 to 6 agricultures are closed down every day. This tendency is the same all over Europe. Agricultural buildings are either demolished or used for other purposes and former farmland is parcelled out for new suburban residential areas. However, these new neighbourhoods are rarely built in correlation with existing buildings, landscape or nature. The present project *New Garden Village* is an alternative solution to this problem.

The objective is:

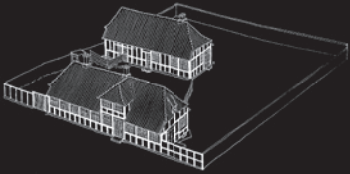
- to create new attractive opportunities for habitation, jobs and recreational activities in the rural districts.
- to secure active farms worthy of preservation.
- to present a new town plan based on an improved adaptation of the landscape. A solution more favourable than traditional parcellation.
- to give rural districts a new identity and opportunities for creative development and a less stressful everyday life closer to nature.

New Garden Village addresses some of the most important conditions for positive development in the country: to establish attractive possibilities for settlement and employment by constructing small villages in connection to farms worthy of preservation.



In the *New Garden Village*, the farms are centres for local production of food and other natural produce: local cheese, meat, dairy produce, wine and beer brewery, ecological fruit/vegetables ... Furthermore, the farm provides the frame for cultural activities and can be adapted to commercial use such as shops, small restaurants, handicraft, Day care centres, youth hostels...

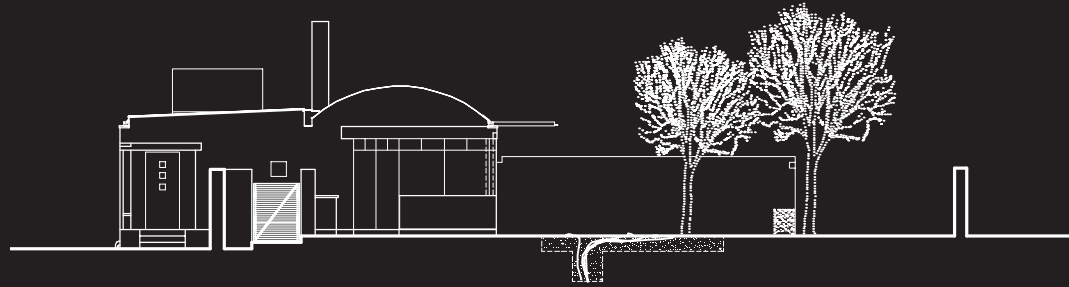
Complementary to the farm situated on the outskirts of an already existing village, the *New Garden Village* consisting of 30-50 small houses is landscaped facing open country. The houses are sited as 'fingers' in the landscape while forming the streets and small squares with trees, benches, fountains, playgrounds...



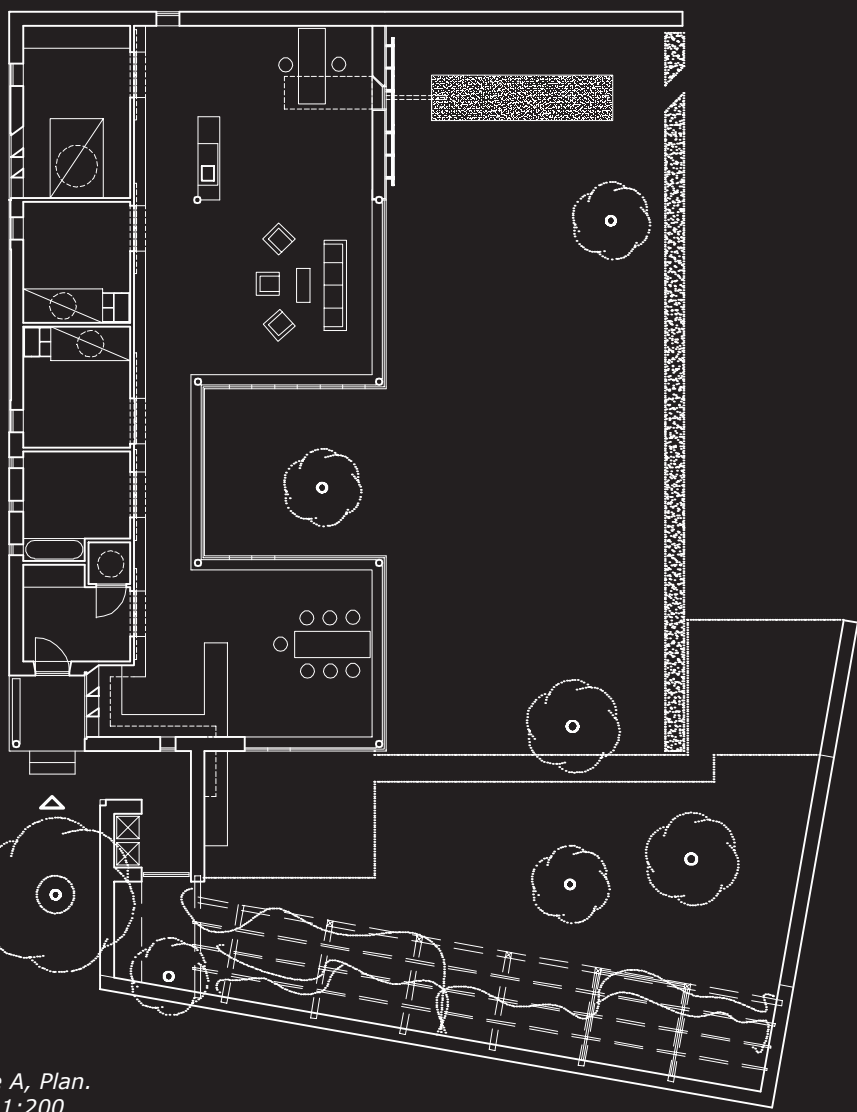
Inspiration : Erichsens farmhouse situated in the small city of Rønne, on the island of Bornholm, with a magnificent garden sheltered of half-timbered walls in the same construction-principle as the house. Limewashed walls, like here, are used as an important component in the *New Garden Village*.

The *New Garden Village* is a modern interpretation of the traditional village with its half-timbered houses. The façades facing the street are plastered (limewashed in colours similar to local traditions), whereas the façades facing the open country consist of windows and wooden panelling. Like the half-timbered house, a *New Garden Village* house is built according to the same principle of construction and can easily be adjusted to individual wishes, needs and economic capacity. None of the houses are alike but still they have a visual coherence and a vivid expression.

New Garden Village vary from small houses of 25, 50, 75 m², to medium-sized family homes of 125, 150 and 175 m², to 'houseshare' sized habitations of 250-350 m². The village embraces people of all ages and income.



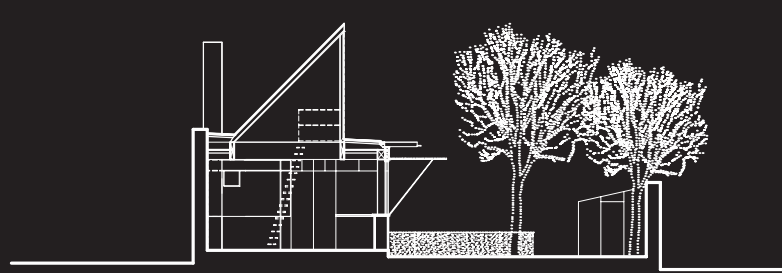
House A, North elevation. Scale 1:200.



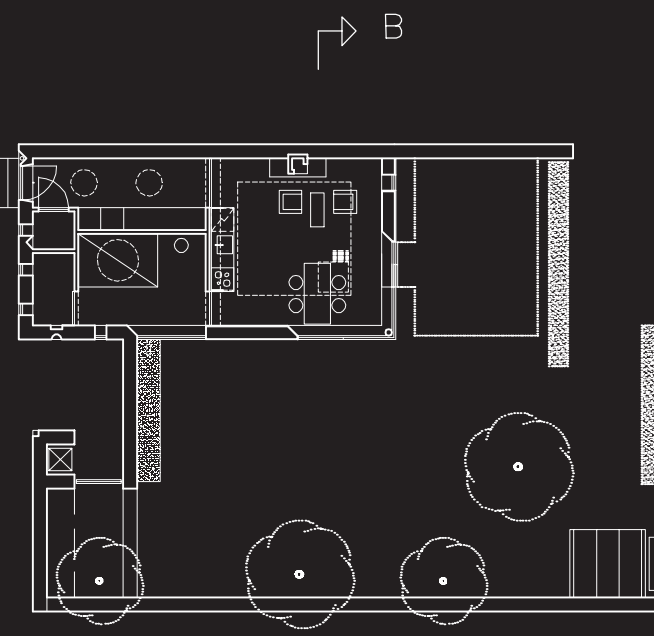
House A, Plan. Scale 1:200. Area: 175 m²



House B, West elevation. Scale 1:200.



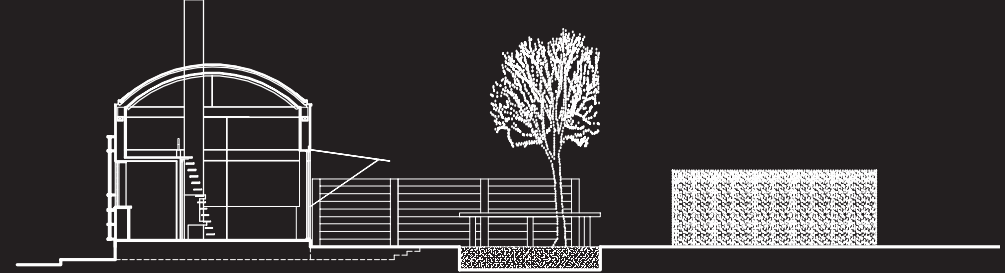
House B, Section B-B. Scale 1:200.



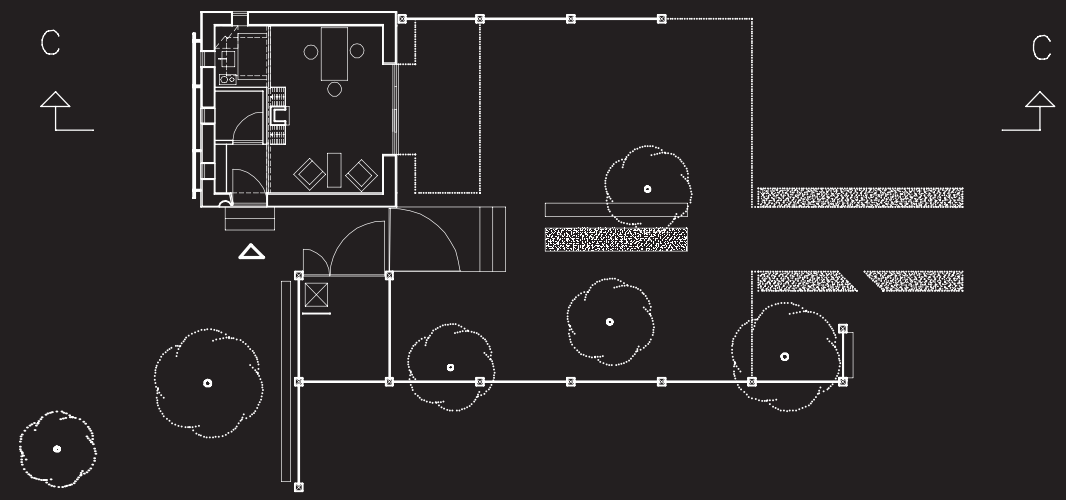
House B, Plan. Scale 1:200. Area: 50 m²



House C, West elevation. Scale 1:200.



House C, Section C-C. Scale 1:200.



House C, Plan. Scale 1:200. Area: 25 m²

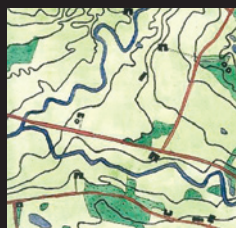


3-D Animation of The New Garden Village, showing grassing animals in front of the farm.



Aerial view, showing how the historic and more organic village-structure gets overruled by a typical outparcelling in Denmark. The new houses are rarely built in correlation with historical and environmental values. Similar tendencies are seen other places in Europe.

Client: Fano Art Museum, Chairman Kerry Harm Nielsen



ARKITEKTUR VÆRKSTEDET